



**MINISTRY OF FOREIGN AFFAIRS
OF DENMARK**

AUSTRALIA

POWER TO X (HYDROGEN)

Michelle Carden/Ronnie Dalsgaard

THE GREEN TRANSITION TEAM



Michelle Carden
Senior Commercial Advisor
Mobile: +61 437 044 366
E-mail: miccar@um.dk



Ronnie Dalsgaard
Senior Advisor
Mobile : +61 499 180 750
E-mail: rondal@um.dk



Mads Kristiansen
Senior Advisor
Mobile : +61 282 985 711
E-mail: madkrs@um.dk

AUSTRALIA

Why Australia? Green Resources & Funding

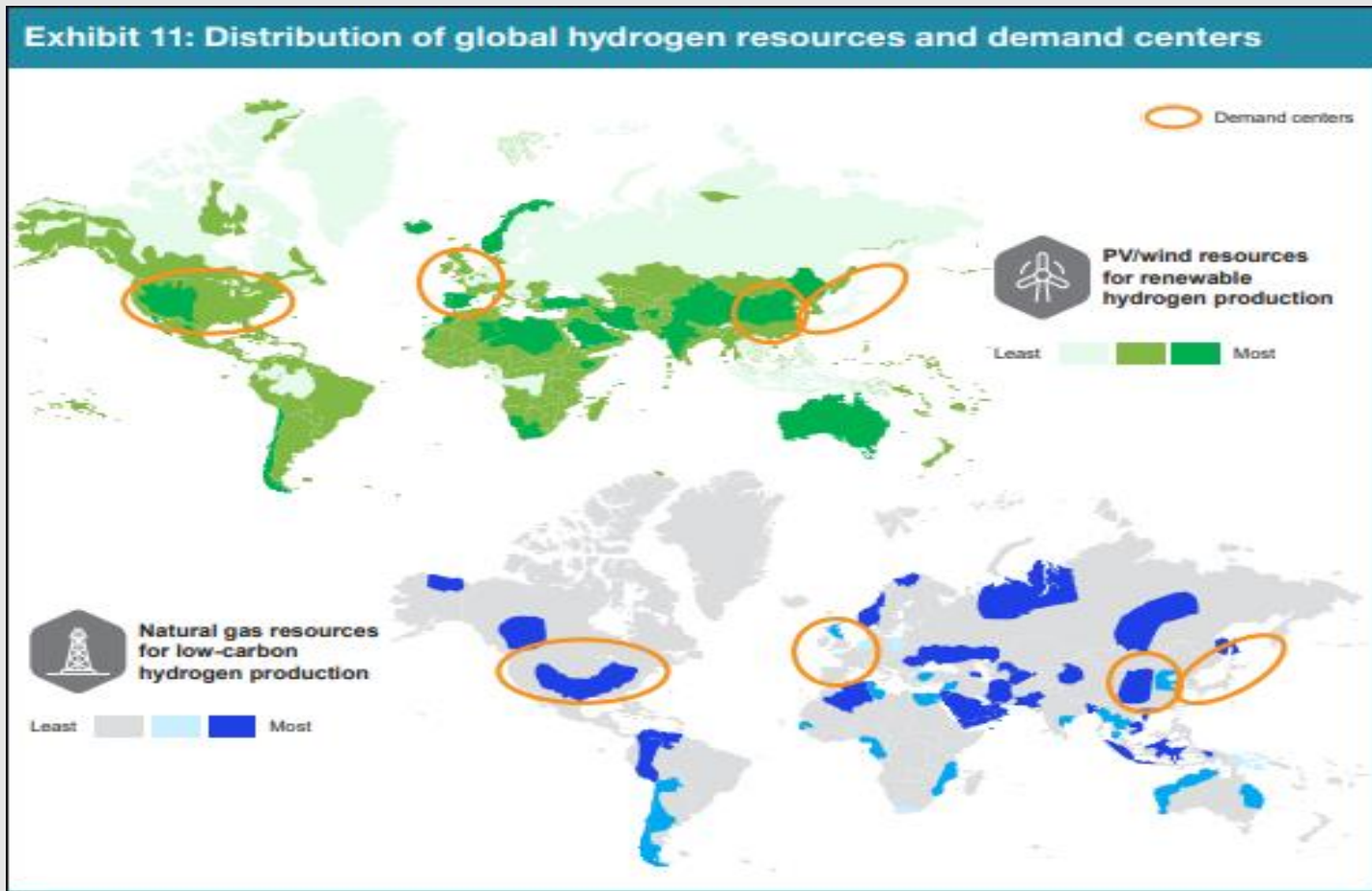
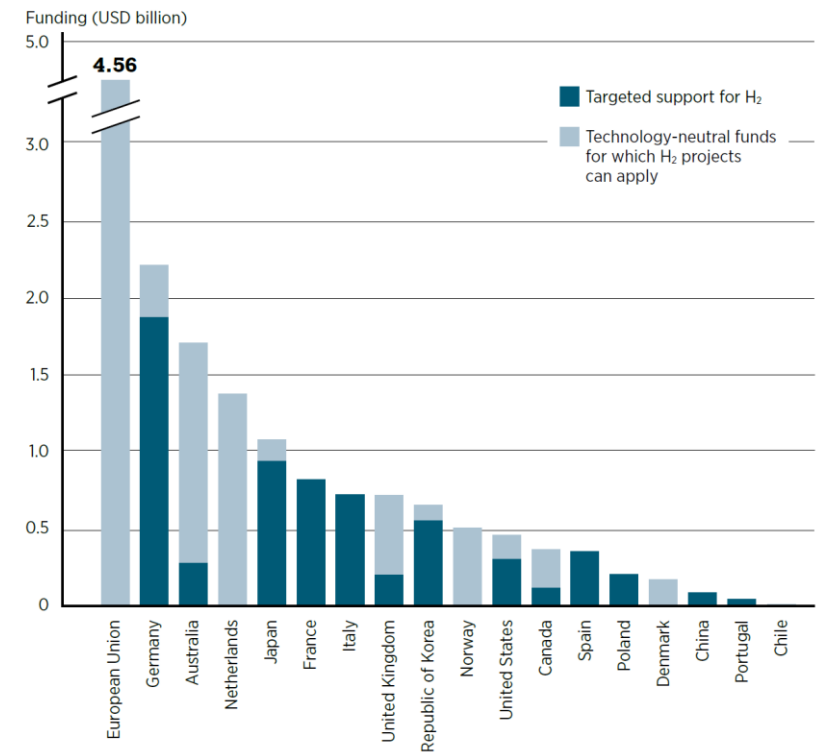


Figure 3.2 Average annual funding potentially available for hydrogen projects, 2021-2030

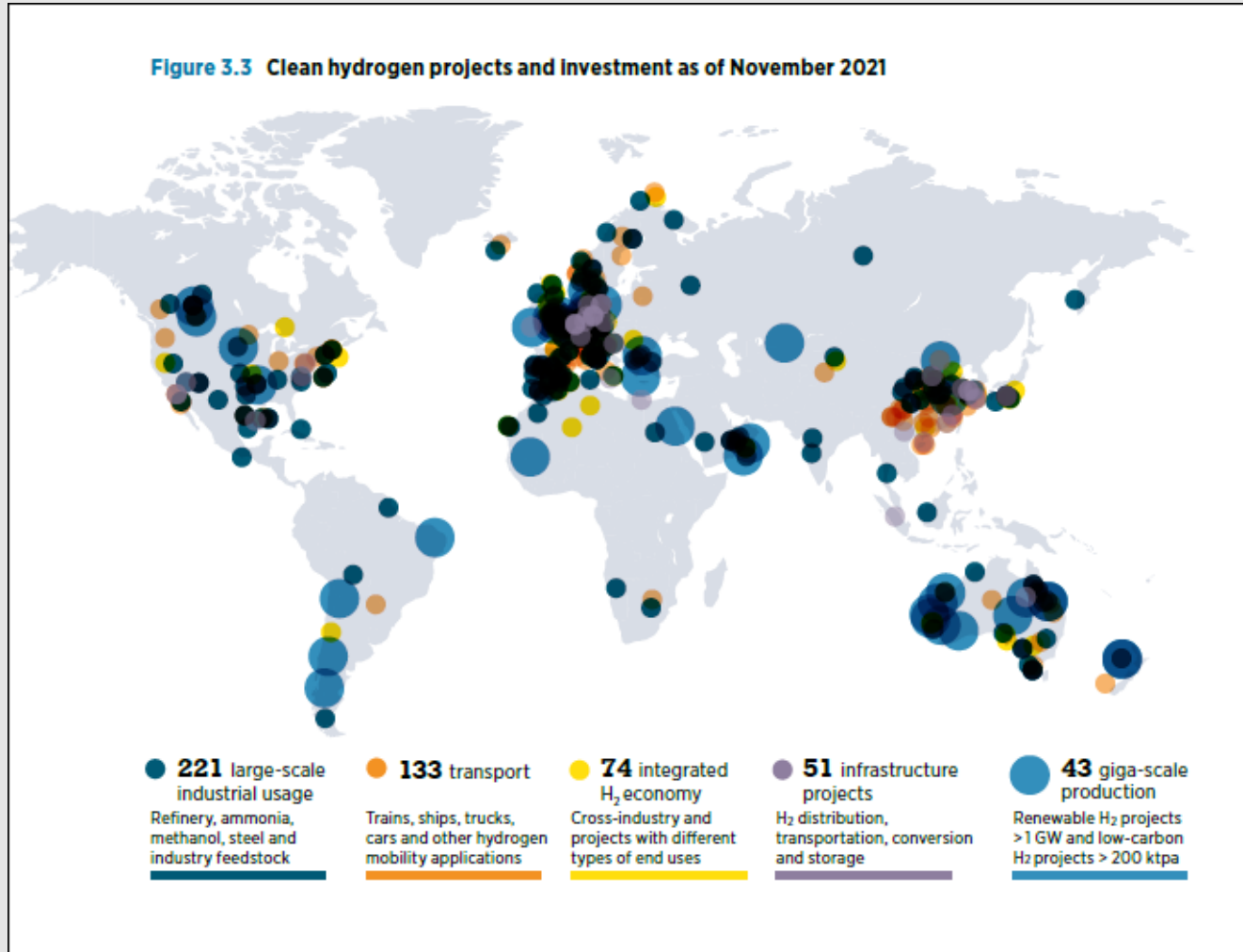


Source: BloombergNEF (2021b).

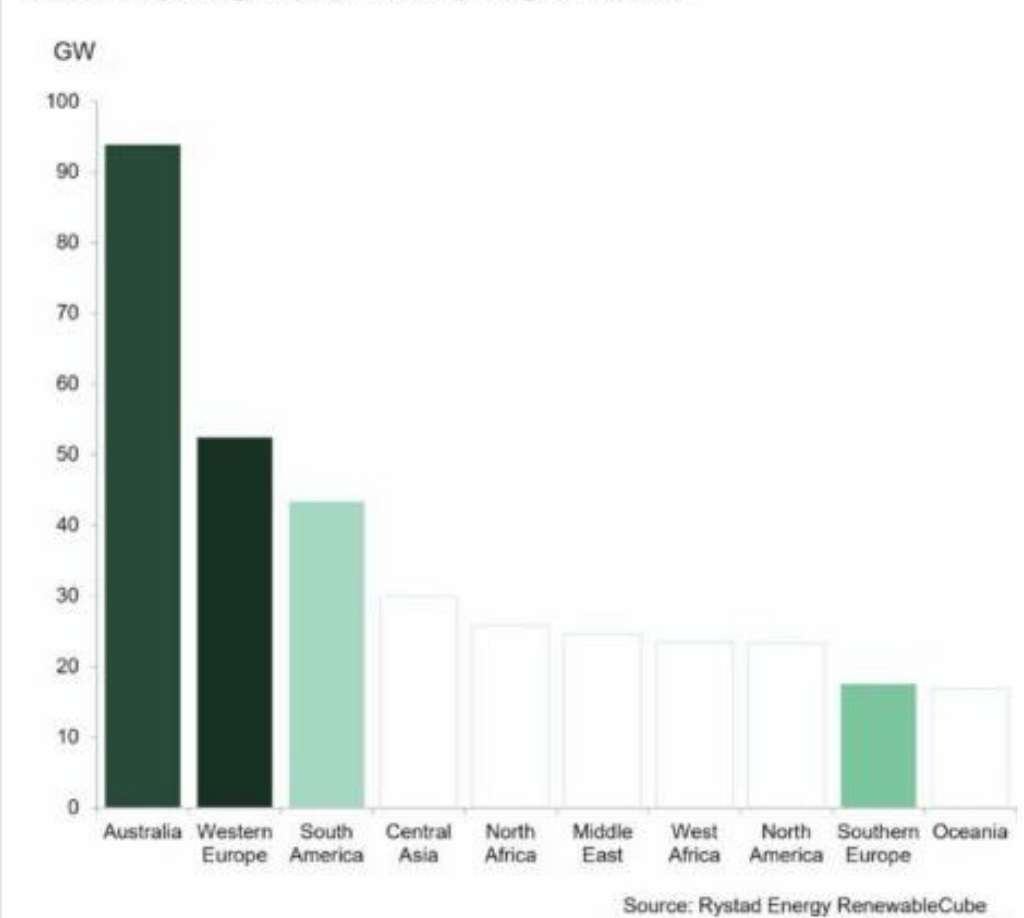
Note: Figure provides a snapshot of support to hydrogen in selected countries as of 5 August 2021. It does not show support mechanisms that have been announced since or are under discussion, such as the hydrogen production tax credit proposed by the United States (US Congress, 2021).

AUSTRALIA

Why Australia? A pipeline of projects at scale

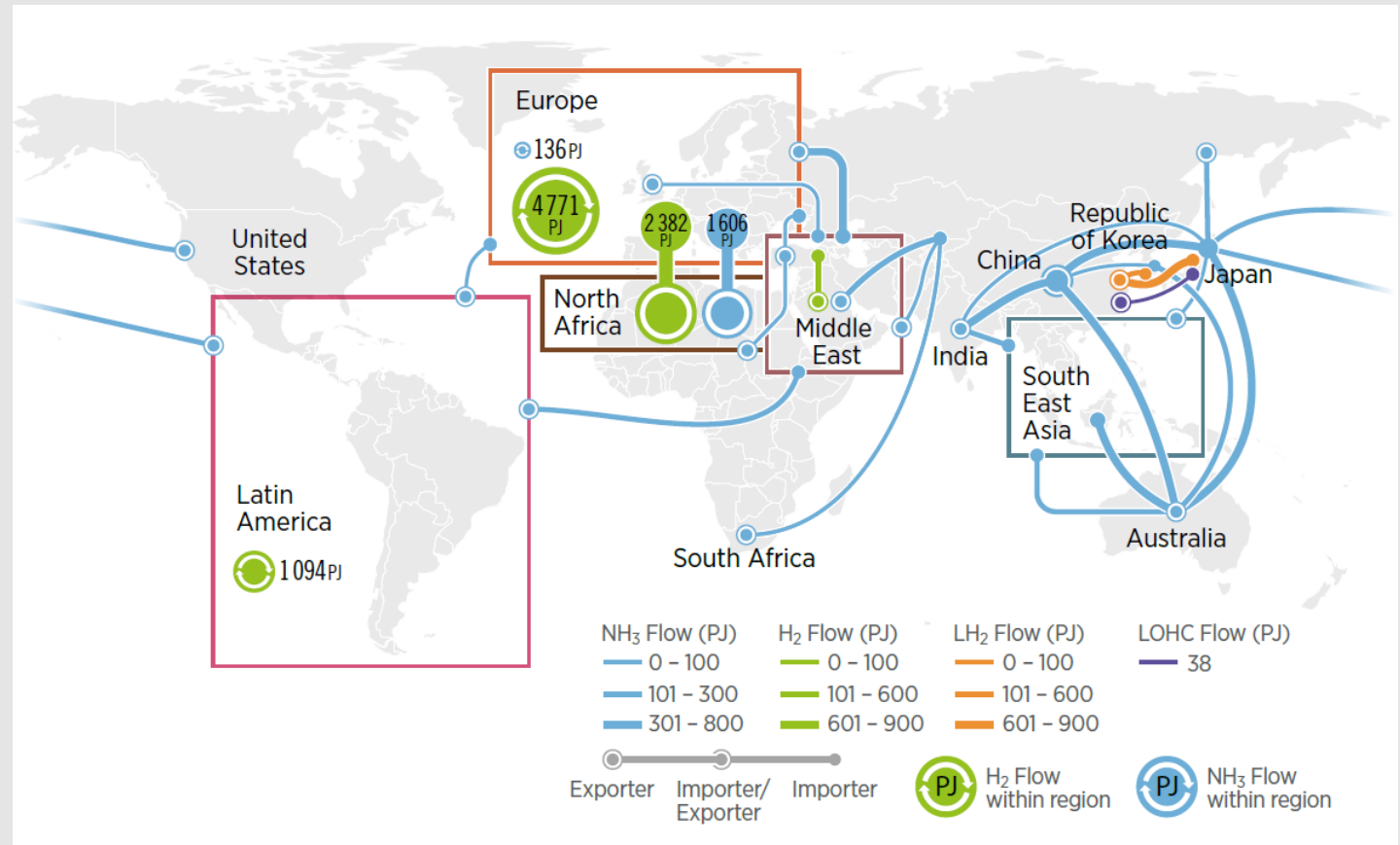
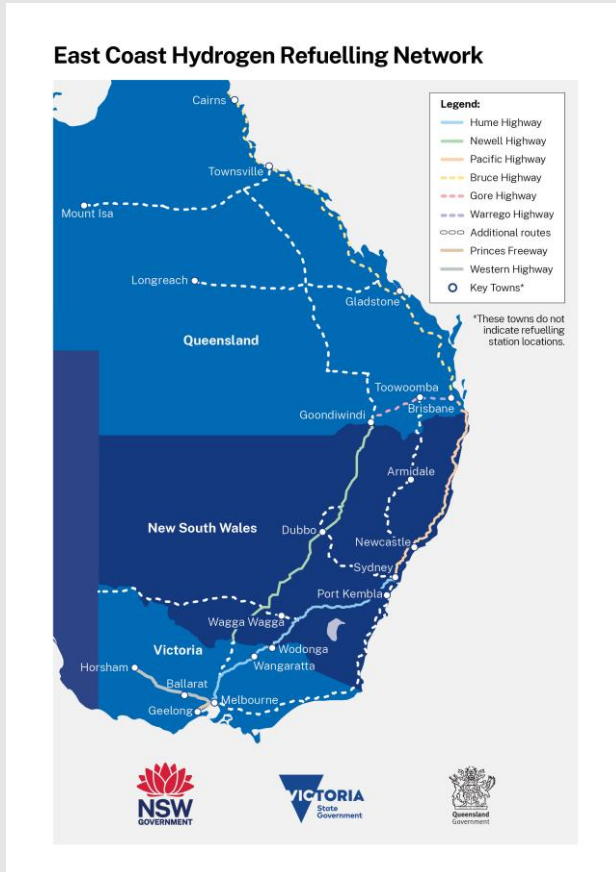


375GW of green hydrogen in the pipeline – Australia tops the Green hydrogen pipeline by region (GW)



AUSTRALIA

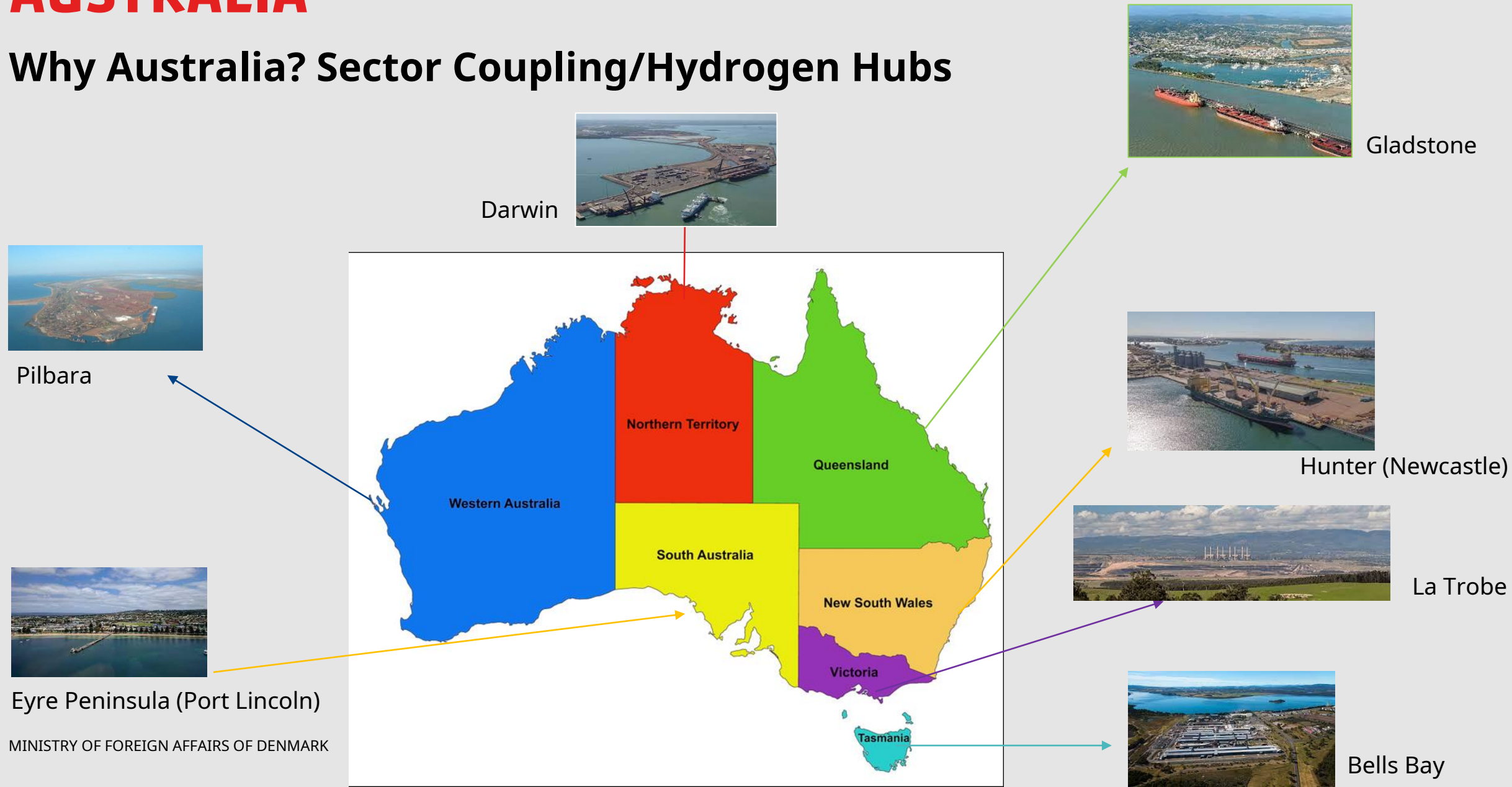
Why Australia? Domestic & export demand



Source: IRENA World Energy Transitions Outlook Pathways

AUSTRALIA

Why Australia? Sector Coupling/Hydrogen Hubs



AUSTRALIA

Why Australia? Quality partners/investors

The logo for Copenhagen Infrastructure Partners (CIP) features the letters 'CIP' in a large, blue, serif font.

Copenhagen Infrastructure Partners

The BHP logo features the letters 'BHP' in a bold, orange, sans-serif font on a white background.The Vestas logo features the word 'Vestas' in a blue, italicized, sans-serif font with a registered trademark symbol.The Rio Tinto logo features the words 'Rio Tinto' in a white, serif font on a red rectangular background.The Fortescue Future Industries logo features the words 'FORTESCUE FUTURE INDUSTRIES' in a black, sans-serif font.The Macquarie logo features a white circular symbol on a black background, followed by the word 'MACQUARIE' in a white, sans-serif font.The bp logo features the letters 'bp' in a green, lowercase, sans-serif font.The thyssenkrupp logo features a white circular symbol on a blue background, followed by the word 'thyssenkrupp' in a white, lowercase, sans-serif font.The Mitsubishi Heavy Industries logo features a red diamond symbol followed by the words 'MITSUBISHI HEAVY INDUSTRIES' in a black, sans-serif font.



**MINISTRY OF FOREIGN AFFAIRS
OF DENMARK**

QUESTIONS?

Michelle Carden

Senior Commercial Advisor

Mobile: +61 437 044 366

E-mail: miccar@um.dk

Ronnie Dalsgaard

Senior Advisor

Mobile : +61 499 180 750

E-mail: rondal@um.dk

Mads Kristiansen

Senior Advisor

Mobile : +61 282 985 711

E-mail: madkrs@um.dk